

# REIMAGINE RESOURCES

what we can see, we can be

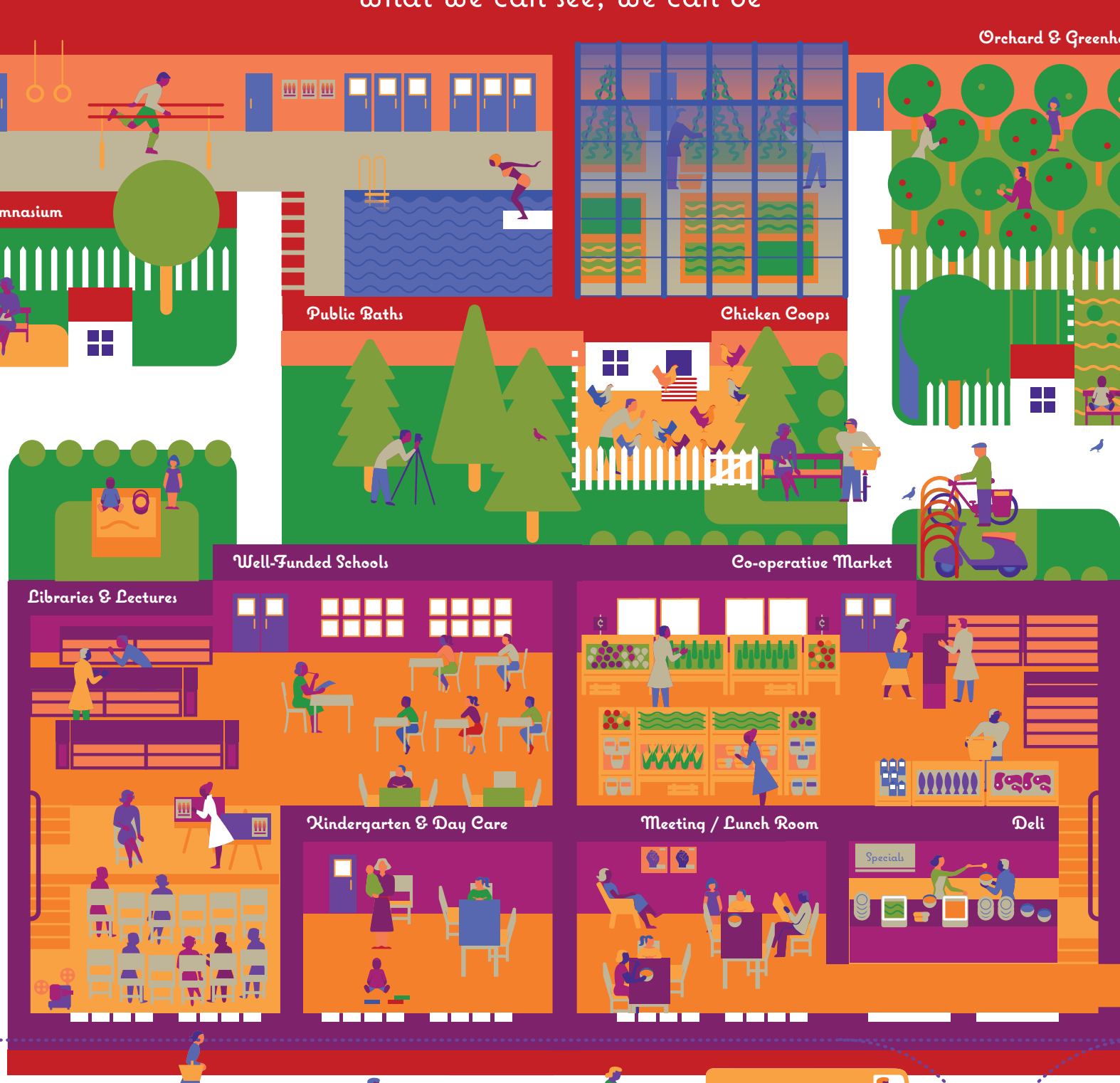
Learn More  
Joseph Frank's Urban Settlements,  
Work, Community, and Collaborative Practices, 1910-1930

Learn More  
Socialist Movement's Move to the Green, From 1900,  
with resources, policy history, and ways to get involved locally

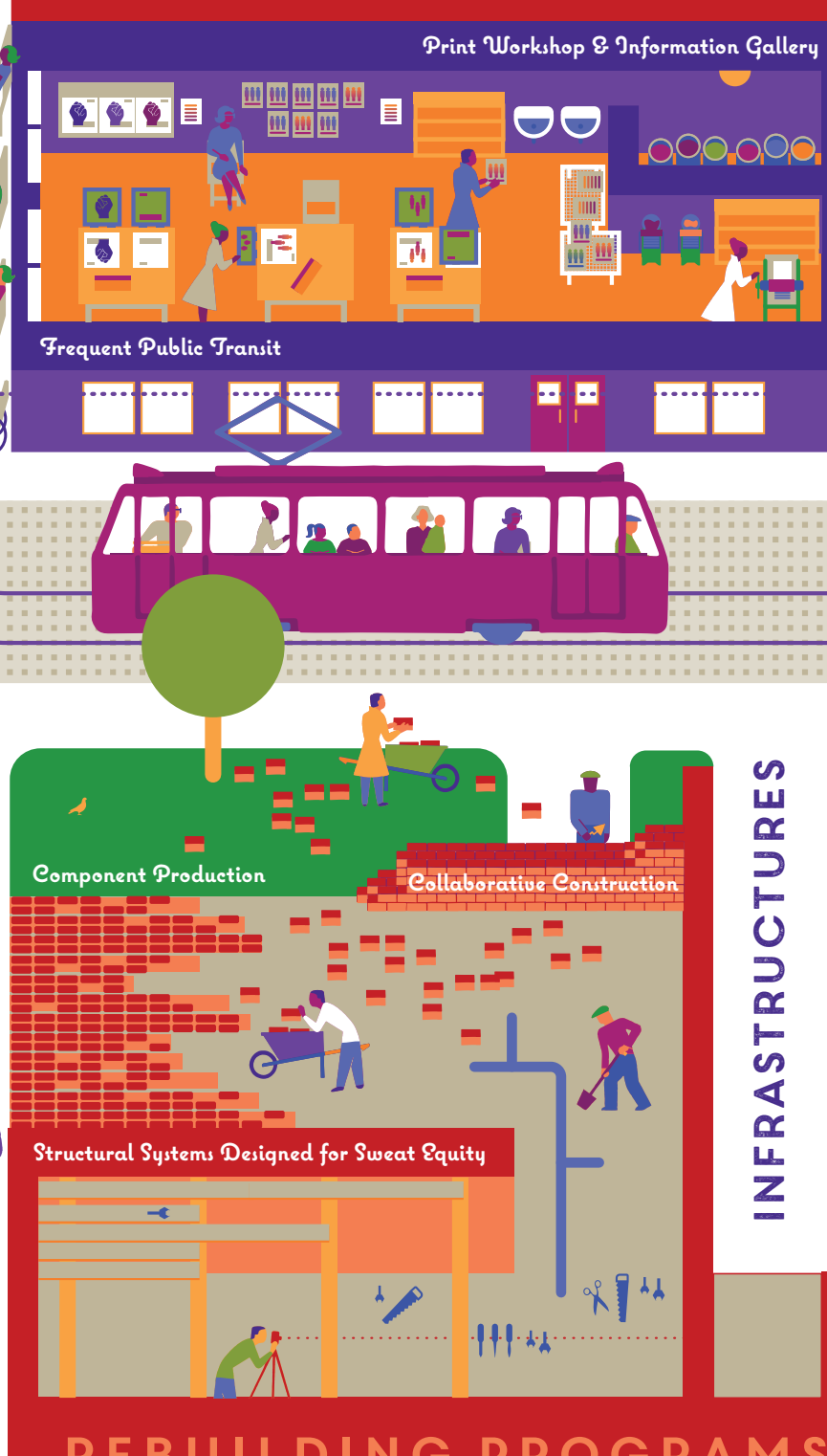
SETTLEMENTS . ALLOTMENTS . 1



SETTLEMENTS . ALLOTMENTS . 2



SETTLEMENTS . ALLOTMENTS . 3



# GREEN NEW DEAL

What does an equitable 'new normal' look like?

**'NOTHING HAS TO BE AS IT IS; EVERYTHING CAN BE DIFFERENT. WE HAVE BEEN WRENCHED OUT OF OUR USUAL PLANS & DOINGS. WE HAVE DISCOVERED A DIFFERENT WORLD.'**

Josef Frank, one of Vienna's city architects, on wartime mutual aid as a precedent for municipal housing, urban job programs, & integrated community resources.  
"After Wars," 1931.